



ZNF498 Polyclonal Antibody

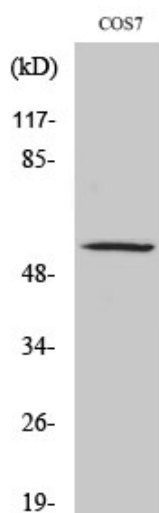
Catalog No	YP-Ab-02191
Isotype	IgG
Reactivity	Human;Monkey
Applications	WB;ELISA
Gene Name	ZNF498
Protein Name	Zinc finger protein 498
Immunogen	The antiserum was produced against synthesized peptide derived from human ZNF498. AA range:331-380
Specificity	ZNF498 Polyclonal Antibody detects endogenous levels of ZNF498 protein.
Formulation	Liquid in PBS containing 50% glycerol, 0.5% BSA and 0.02% sodium azide.
Source	Polyclonal, Rabbit,IgG
Purification	The antibody was affinity-purified from rabbit antiserum by affinity-chromatography using epitope-specific immunogen.
Dilution	Western Blot: 1/500 - 1/2000. ELISA: 1/40000. Not yet tested in other applications.
Concentration	1 mg/ml
Purity	≥90%
Storage Stability	-20°C/1 year
Synonyms	ZNF498; ZSCAN25; Zinc finger protein 498; Zinc finger and SCAN domain-containing protein 25
Observed Band	30kD
Cell Pathway	Nucleus .
Tissue Specificity	Fetal brain,Lung,Lymph,Spleen,
Function	function:May be involved in transcriptional regulation.,sequence caution:Wrong choice of frame.,similarity:Belongs to the krueppel C2H2-type zinc-finger protein family.,similarity:Contains 1 SCAN box domain.,similarity:Contains 7 C2H2-type zinc fingers.,
Background	This gene encodes a protein that bears some similarity to zinc finger proteins, which are involved in DNA binding and protein-protein interactions. Multiple alternatively spliced transcript variants have been identified, but the full-length nature for most of them has not been determined. [provided by RefSeq, Jul 2008],
matters needing attention	Avoid repeated freezing and thawing!



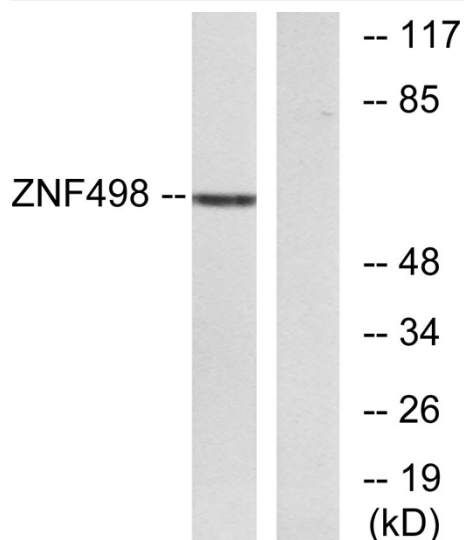
Usage suggestions

This product can be used in immunological reaction related experiments. For more information, please consult technical personnel.

Products Images



Western Blot analysis of various cells using ZNF498 Polyclonal Antibody. Secondary antibody(catalog#:RS0002) was diluted at 1:20000 cells nucleus extracted by Minute TM Cytoplasmic and Nuclear Fractionation kit (SC-003, Inventbiotech, MN, USA).



Western blot analysis of lysates from COS7 cells, using ZNF498 Antibody. The lane on the right is blocked with the synthesized peptide.